

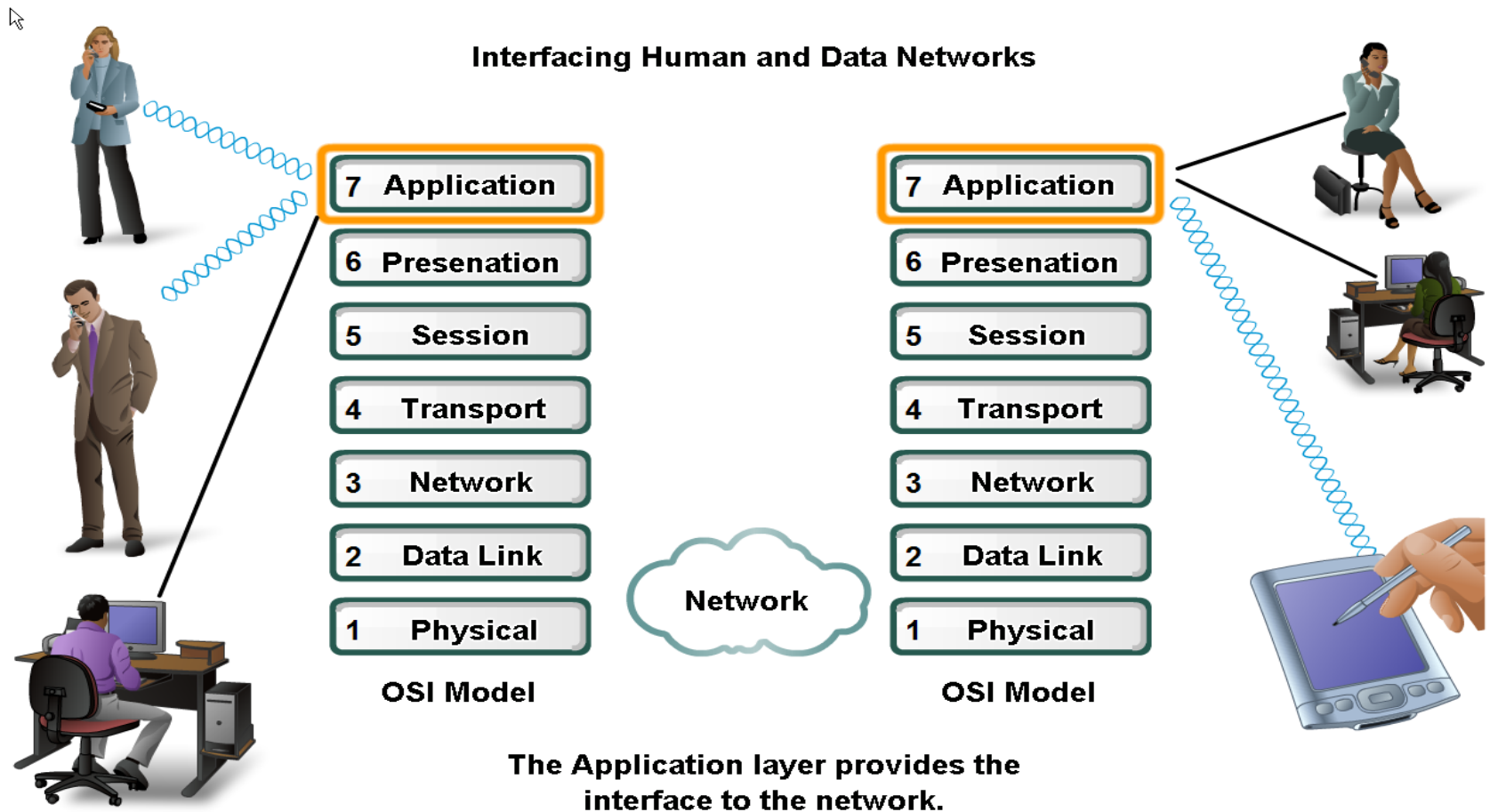


Application Layer Functionality and Protocols



Applications

- The Interface Between Human and Data Networks

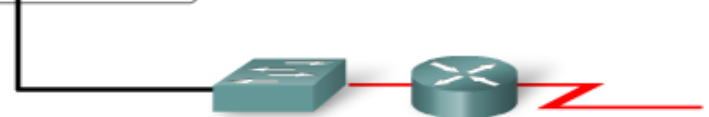


Applications

The Human Network Generates Data



The Application layer prepares human communication for transmission over the data network.



Network



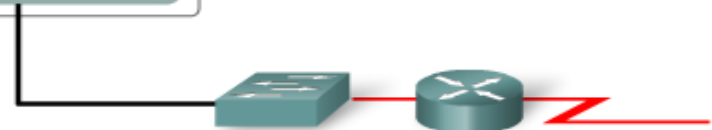
Applications

The Human Network Generates Data

People create the communication.



The Application layer prepares human communication for transmission over the data network.



Network



Applications

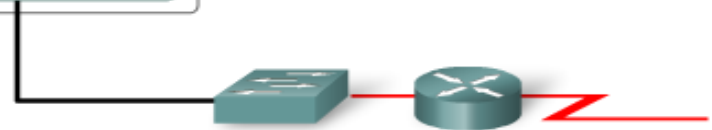
The Human Network Generates Data



Software and hardware convert communication to a digital format.



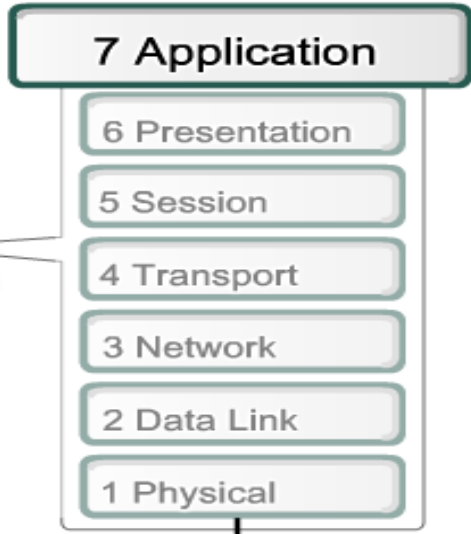
The Application layer prepares human communication for transmission over the data network.



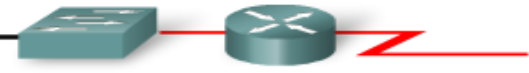
Applications

The Human Network Generates Data

Application layer services initiate the data transfer.



The Application layer prepares human communication for transmission over the data network.



Network



Applications

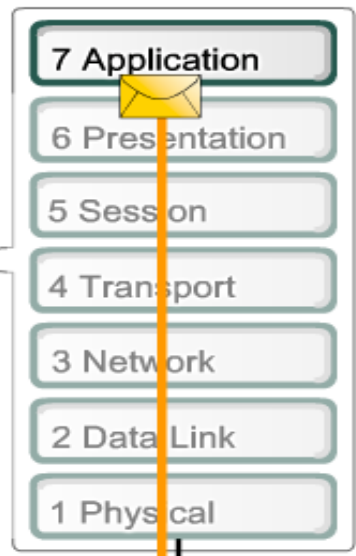
The Human Network Generates Data

Application layer services



People

Software and hardware



Each layer plays its role.

The Application layer prepares human communication for transmission over the data network.



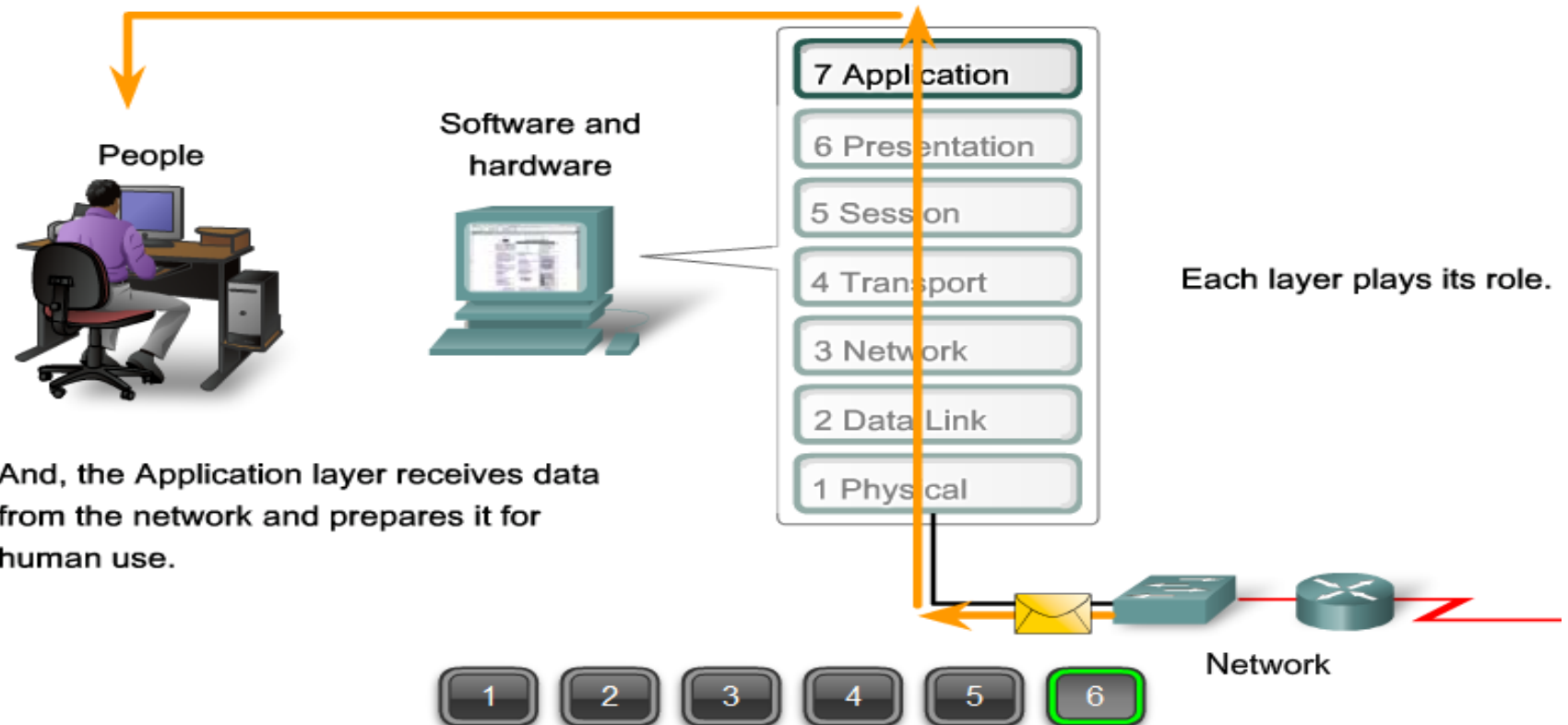
Network



Applications

The Human Network Generates Data

Application layer services

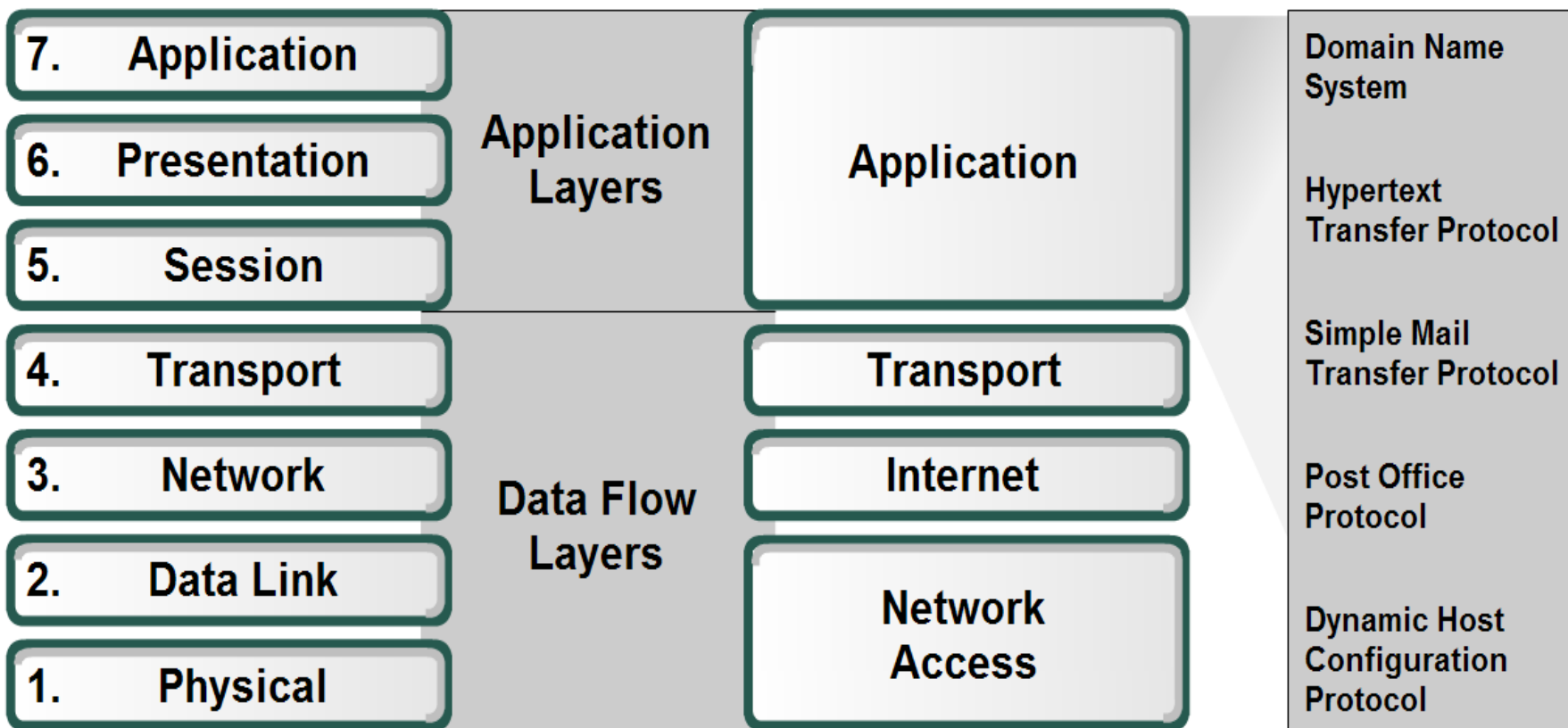


Applications

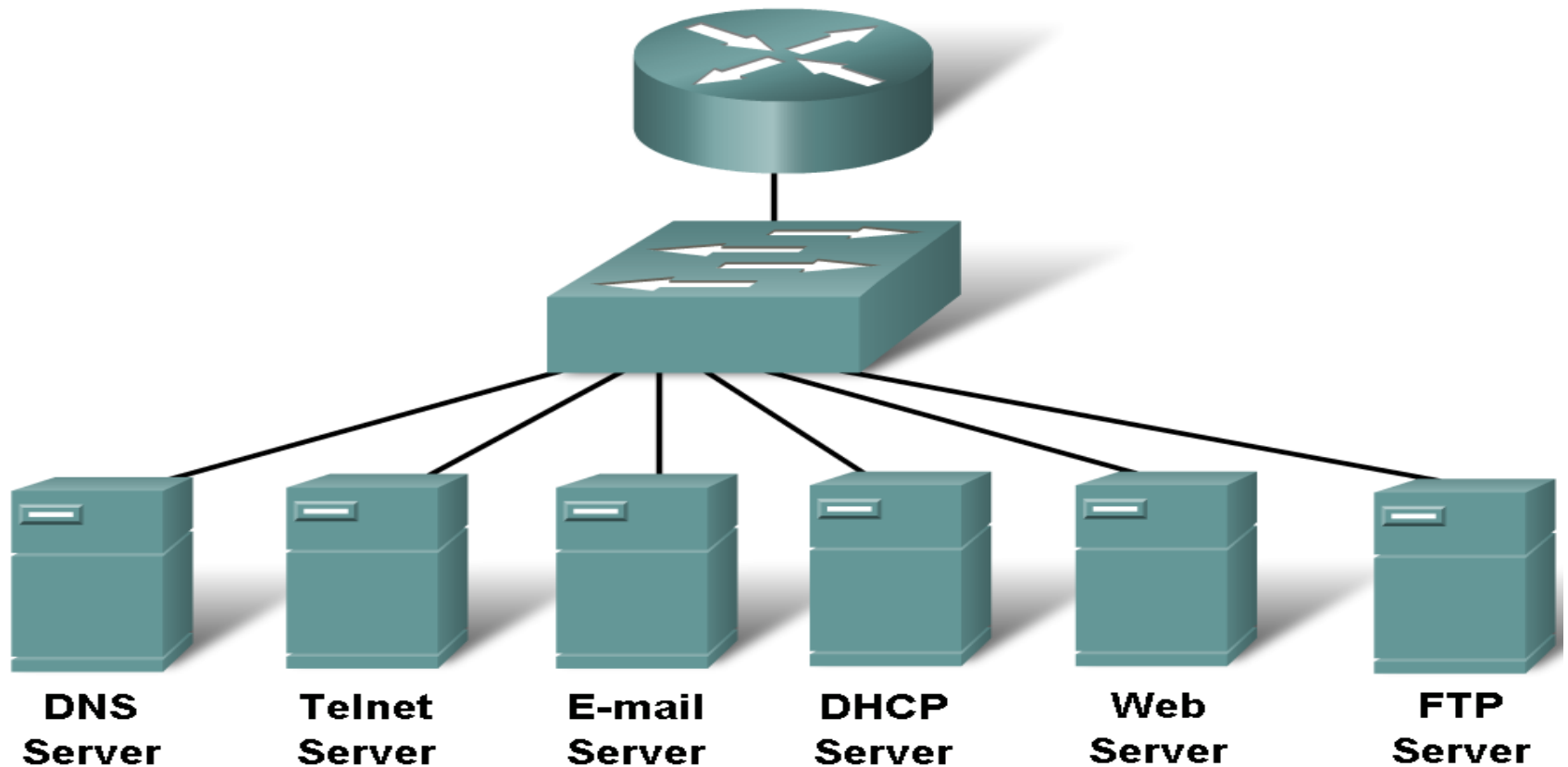


OSI Model

TCP/IP Model

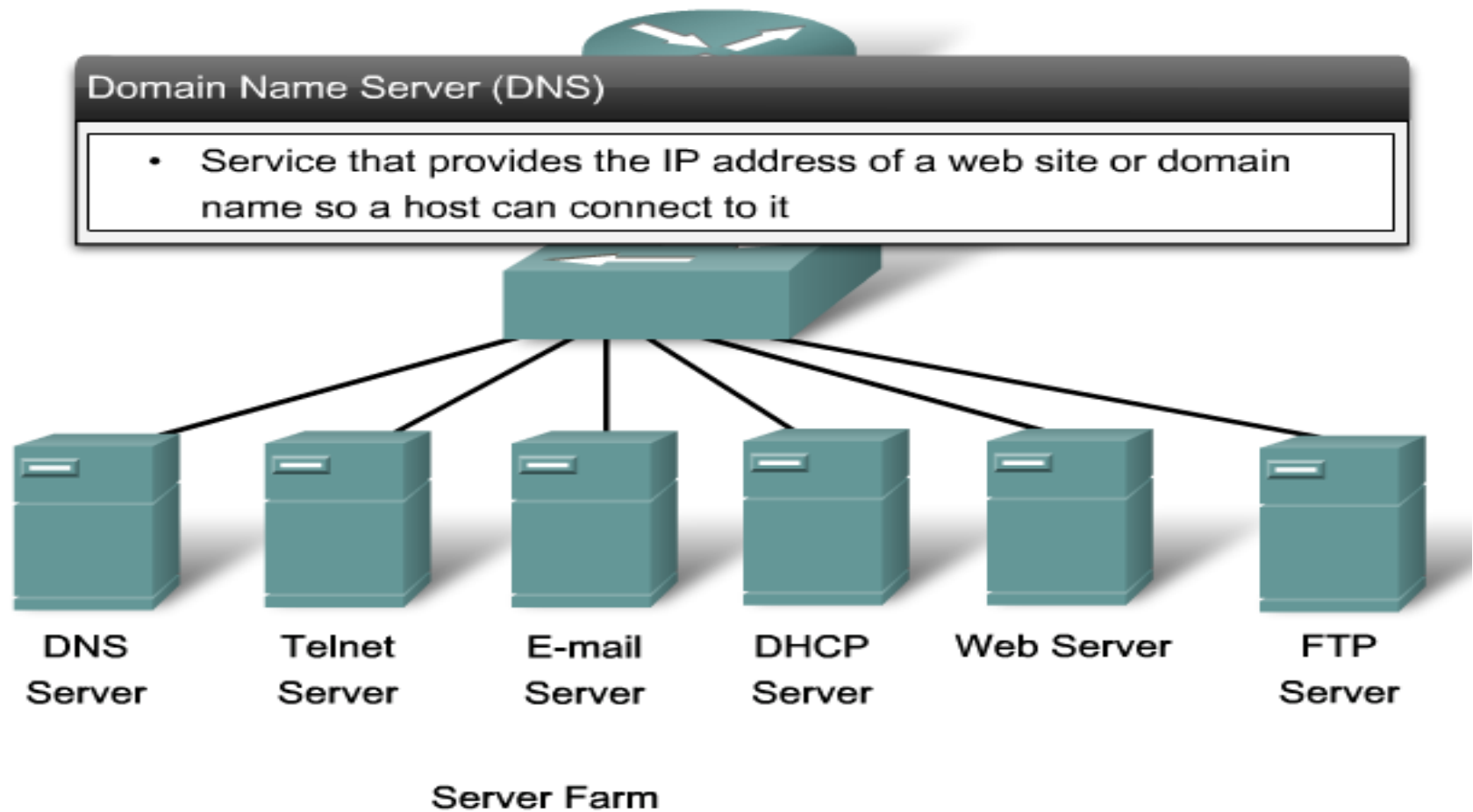


Server Farm

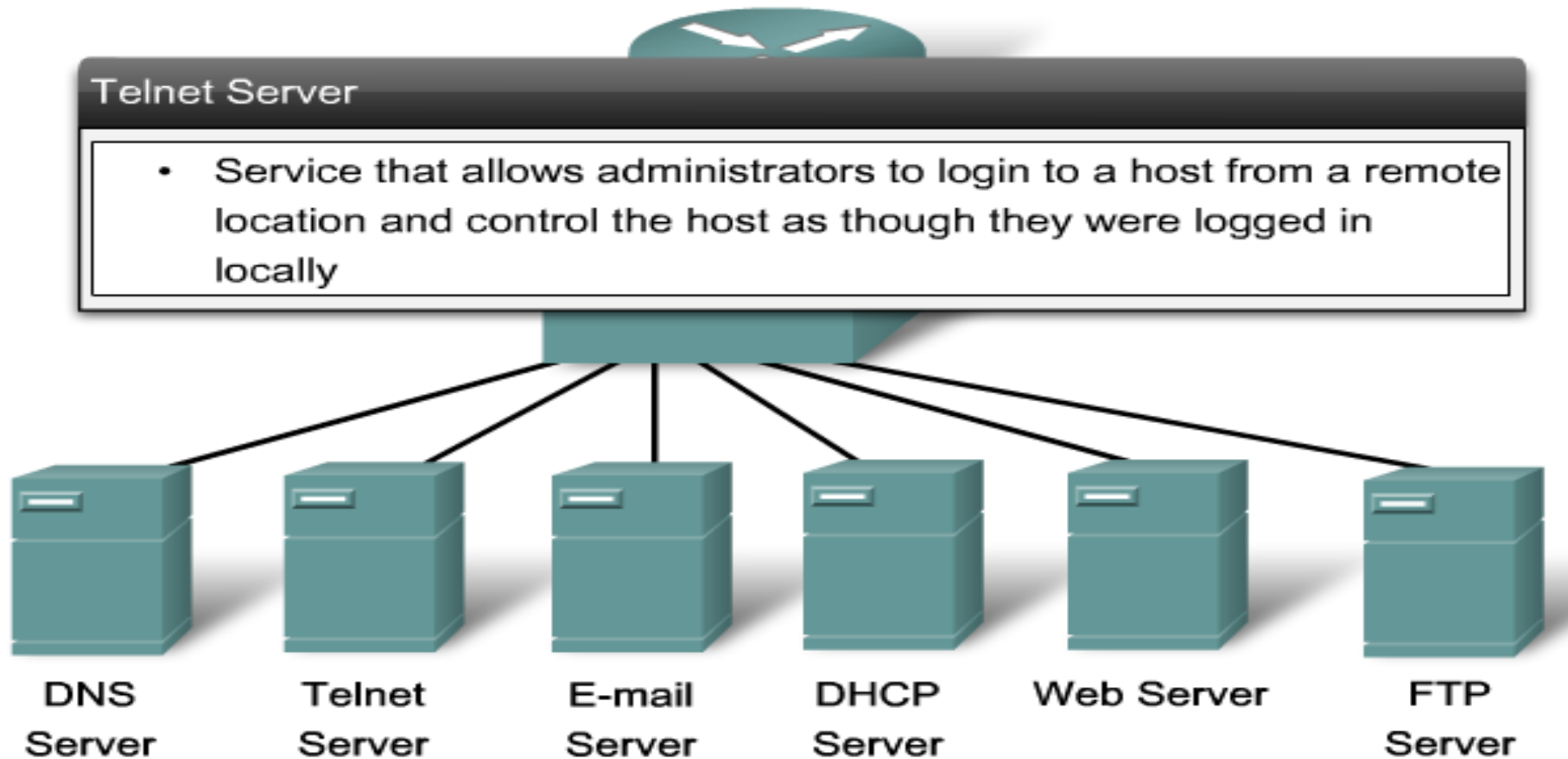


Server Farm

Server Farm

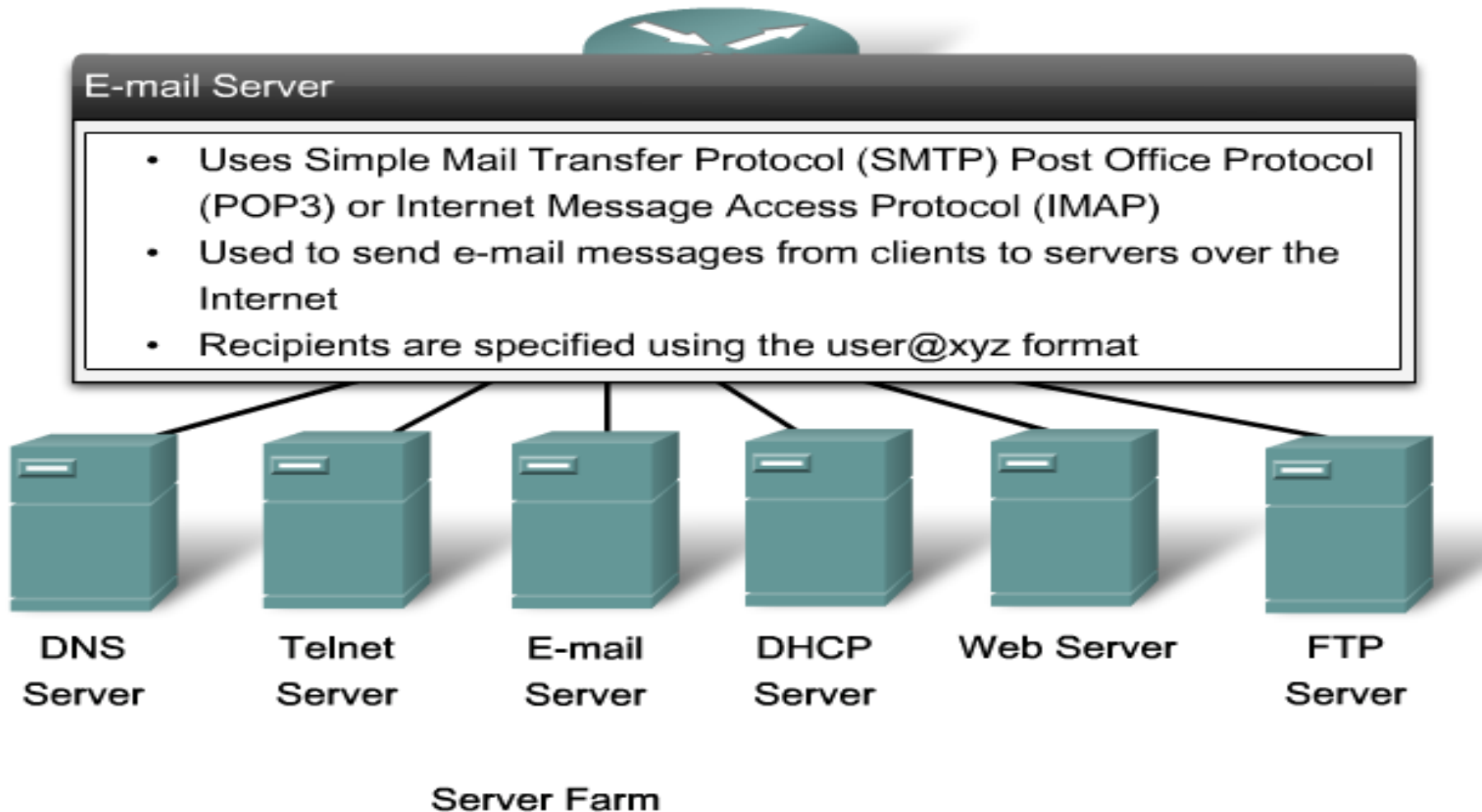


Server Farm

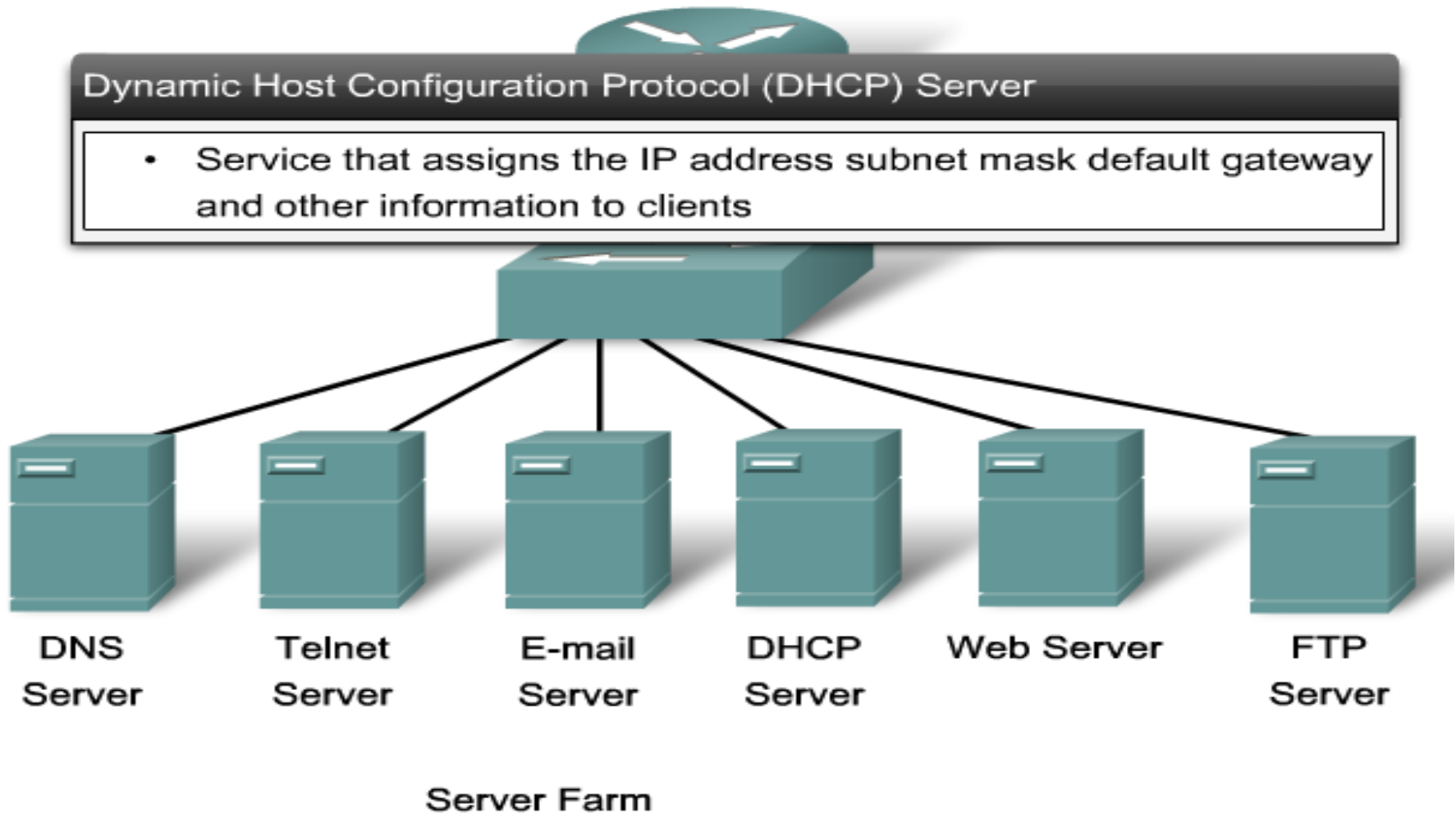


Server Farm

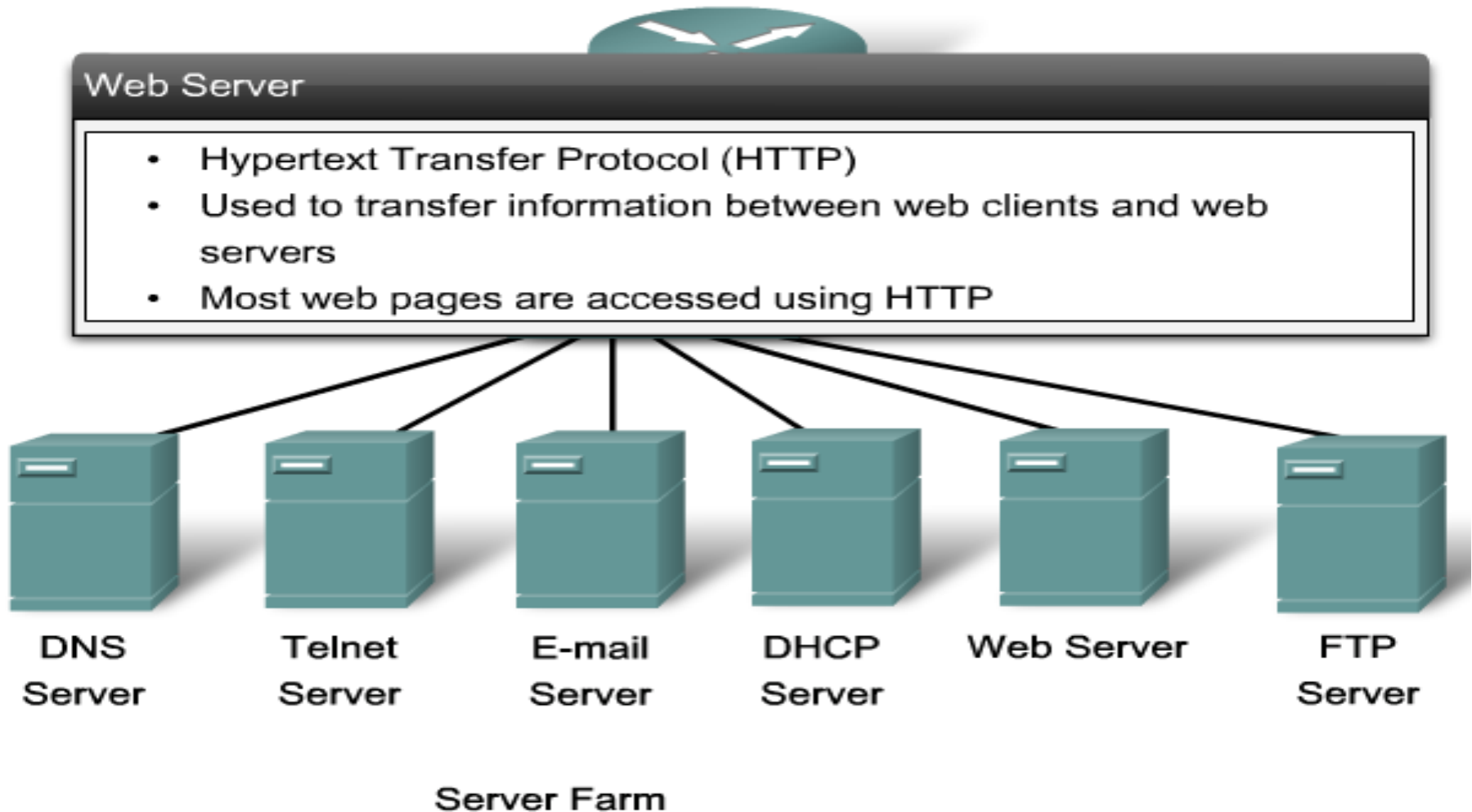
Server Farm



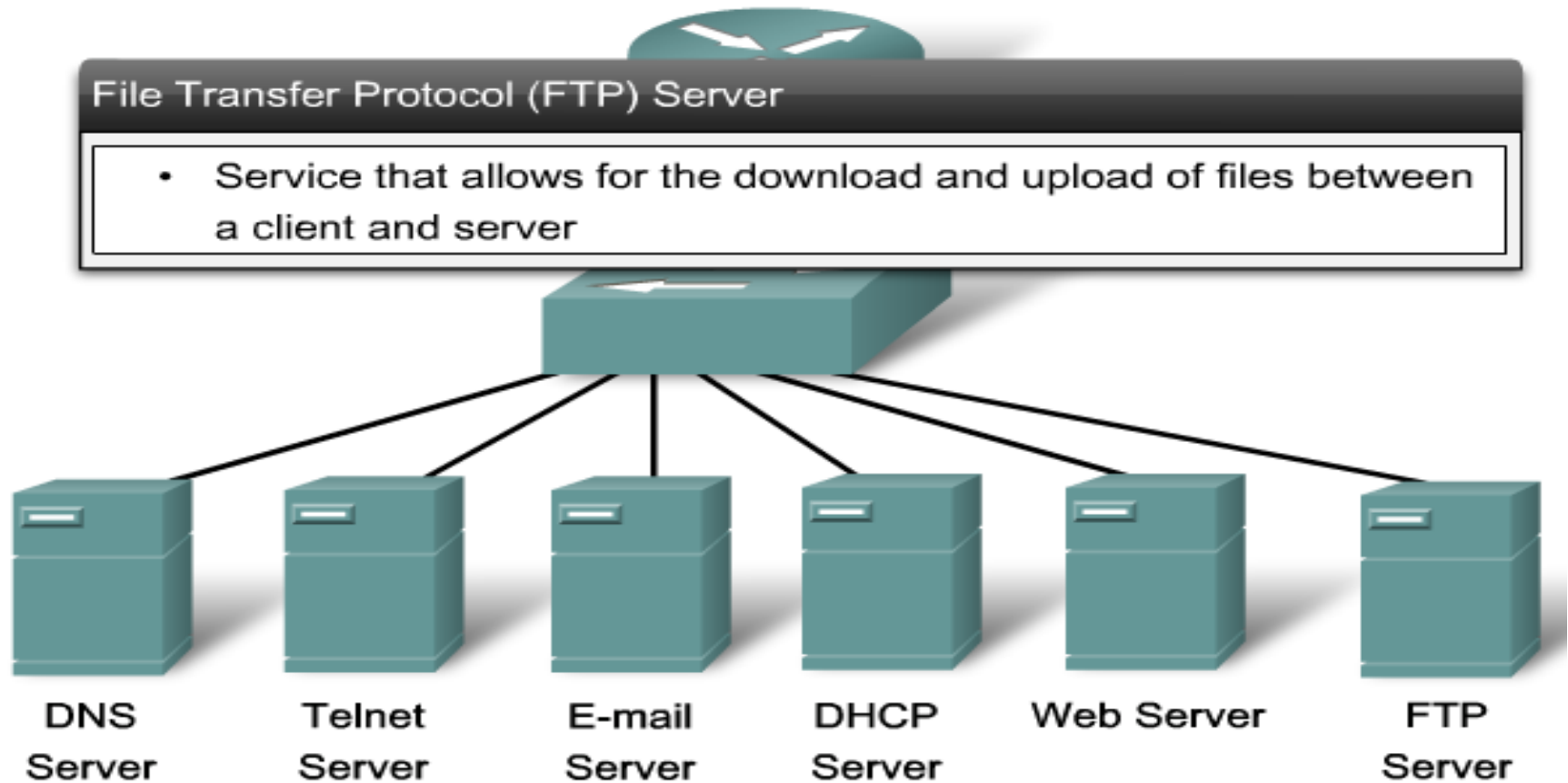
Server Farm



Server Farm



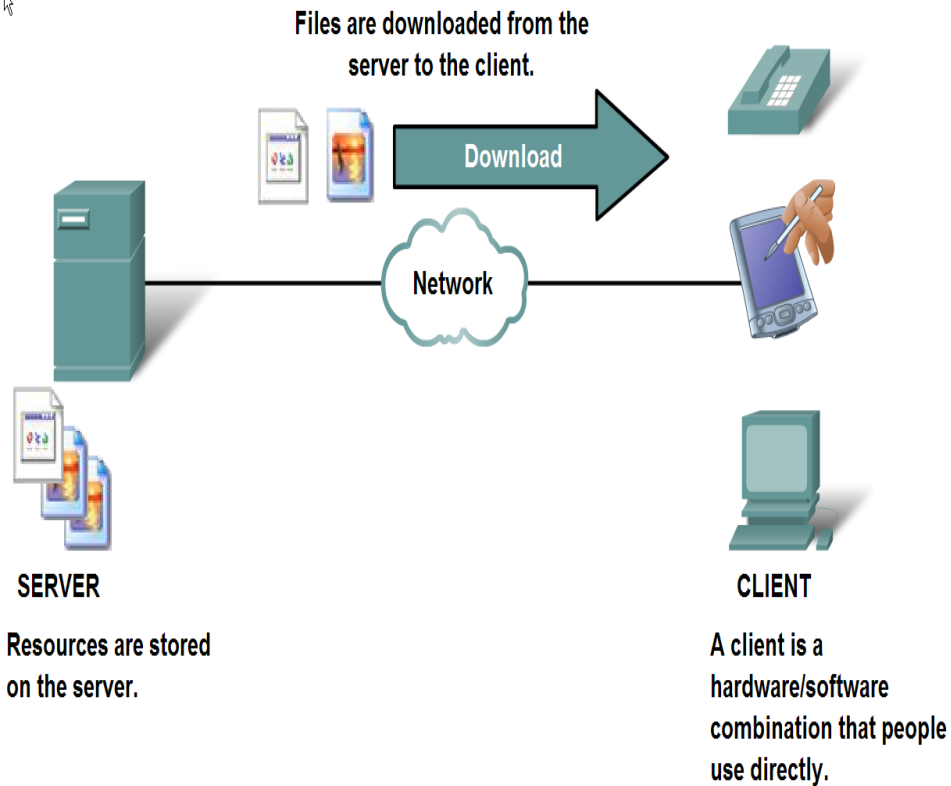
Server Farm



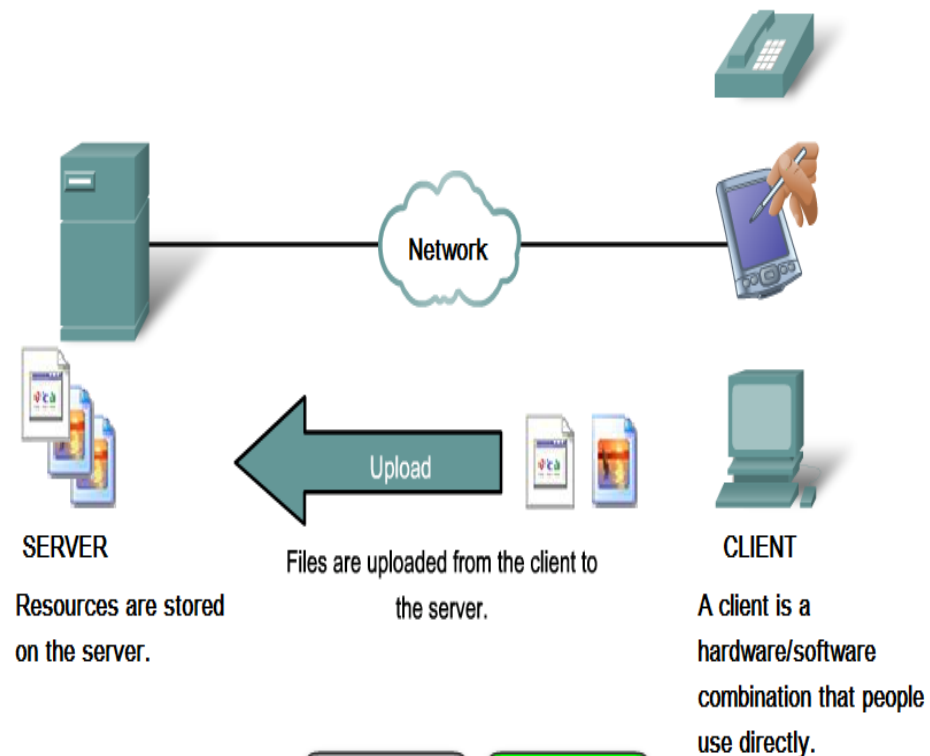
Server Farm

Client/Server Model

Client/Server Model

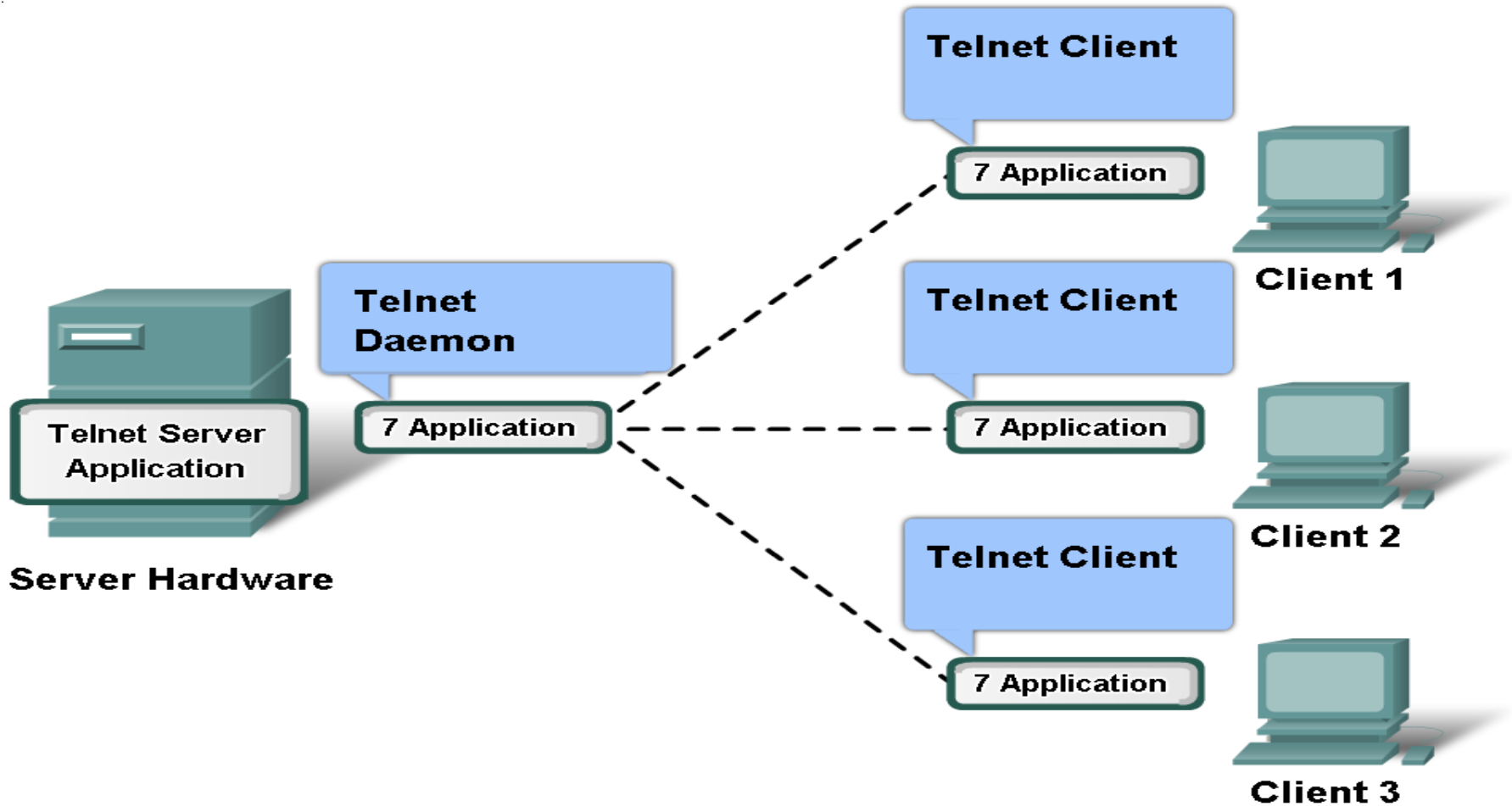


Client/Server Model



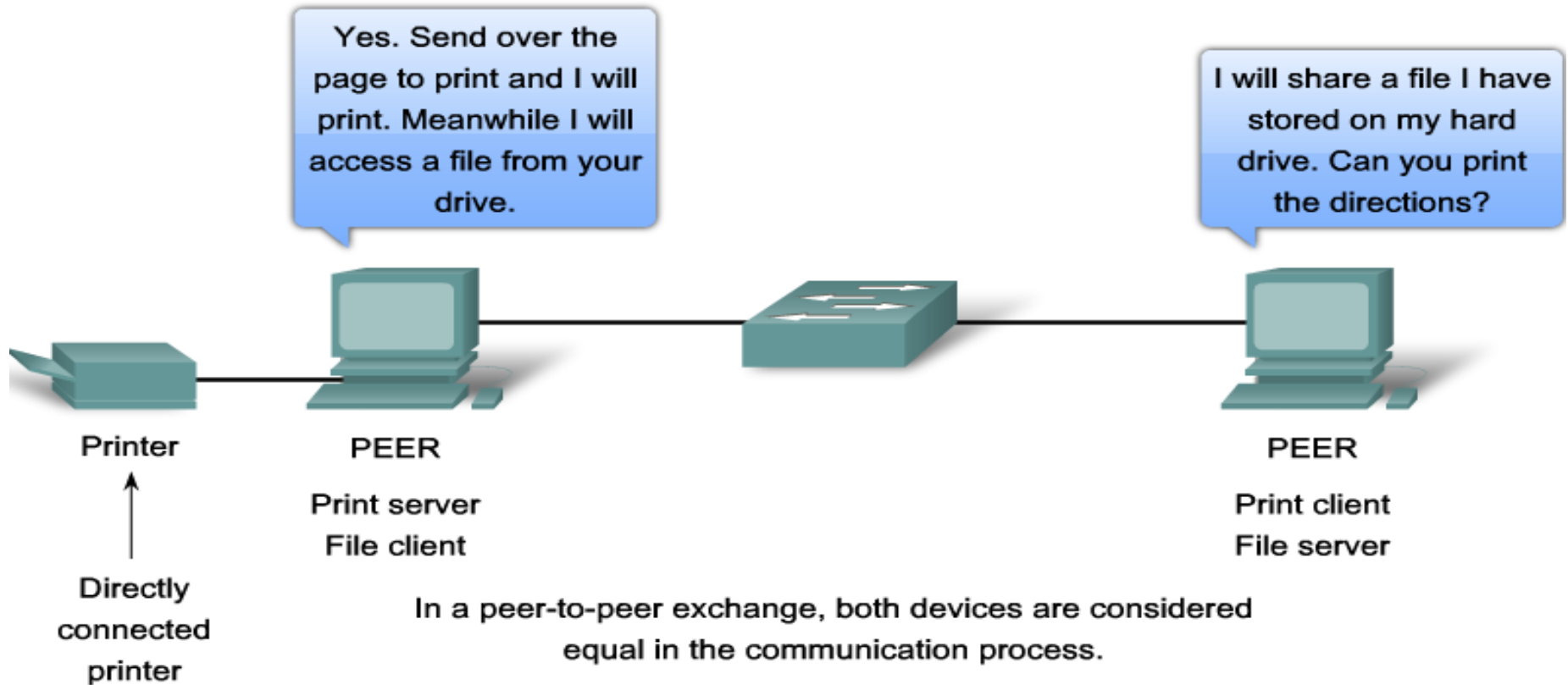
Client/Server Model

Server processes may support multiple clients.



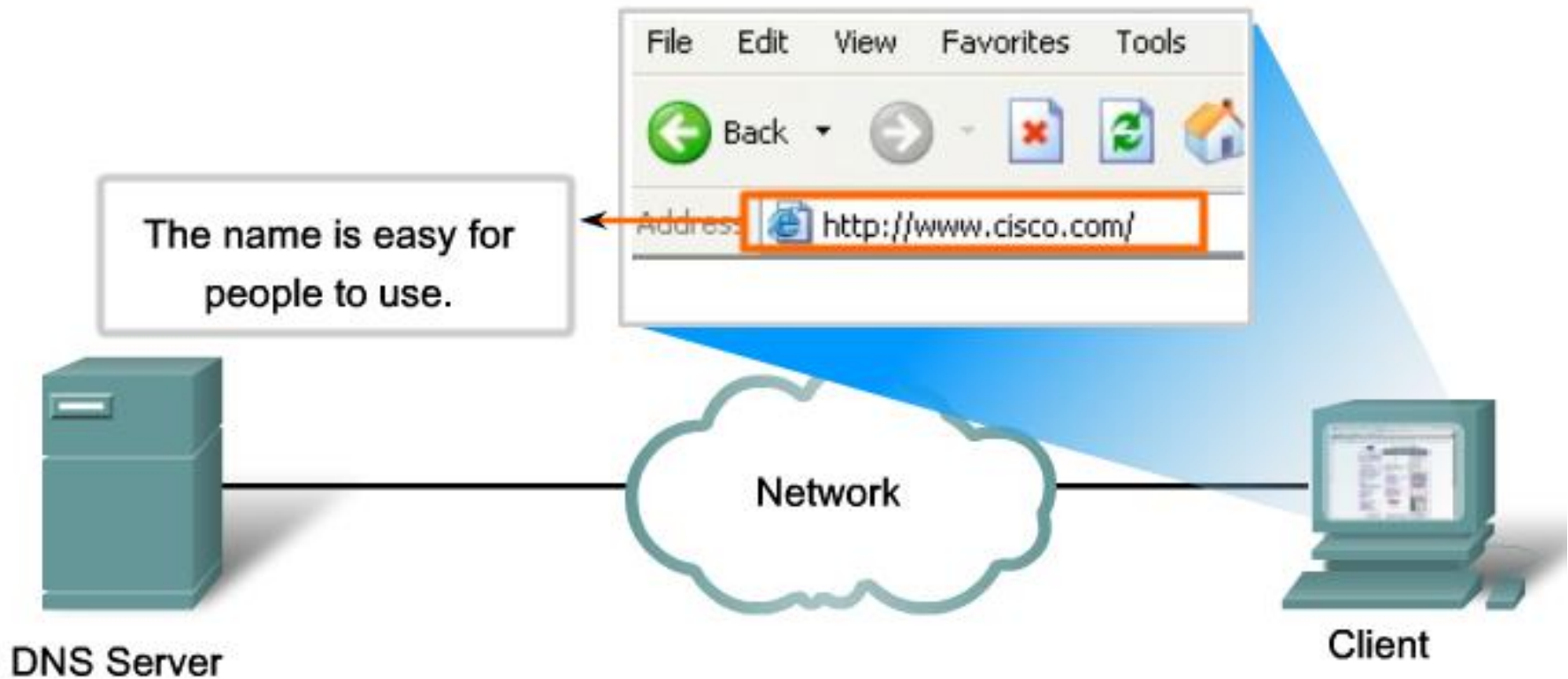
Peer to Peer Applications

Peer-to-Peer Networking



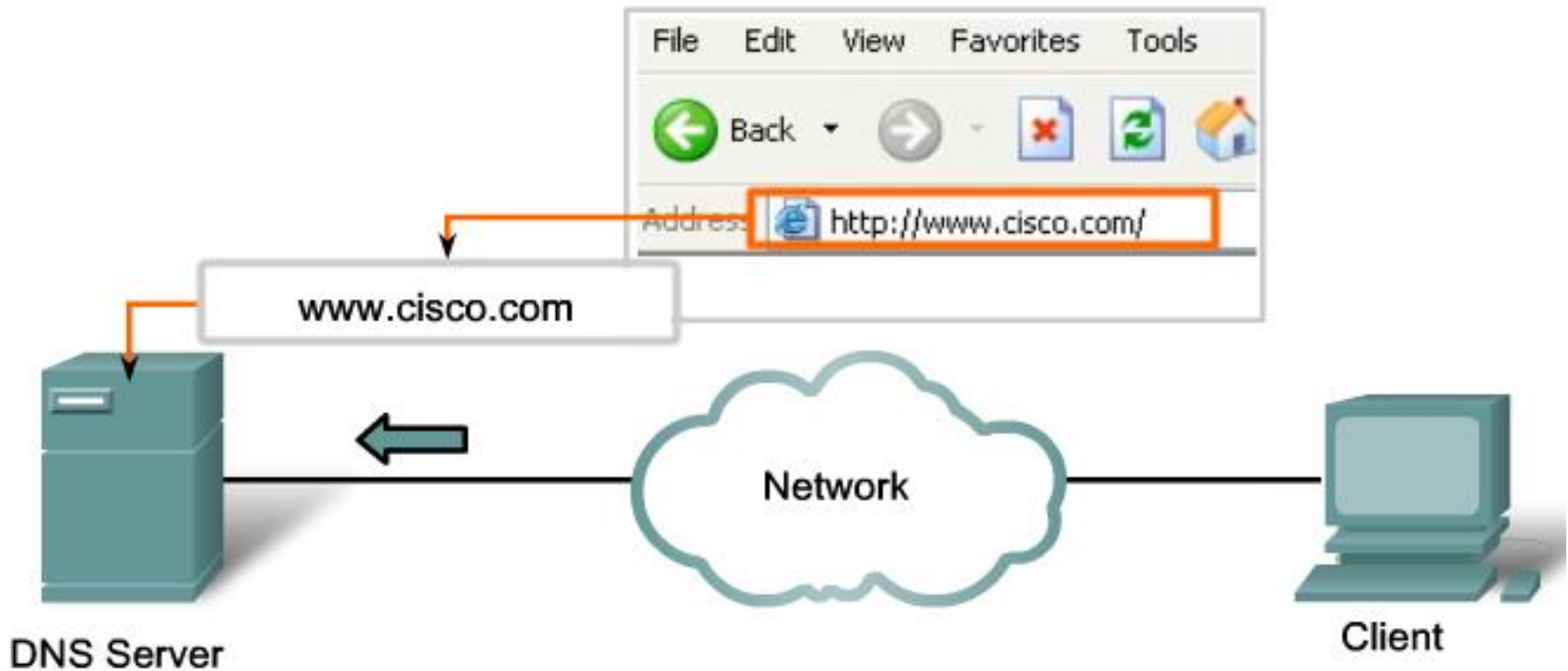
Domain Name Server DNS

Resolving DNS Addresses



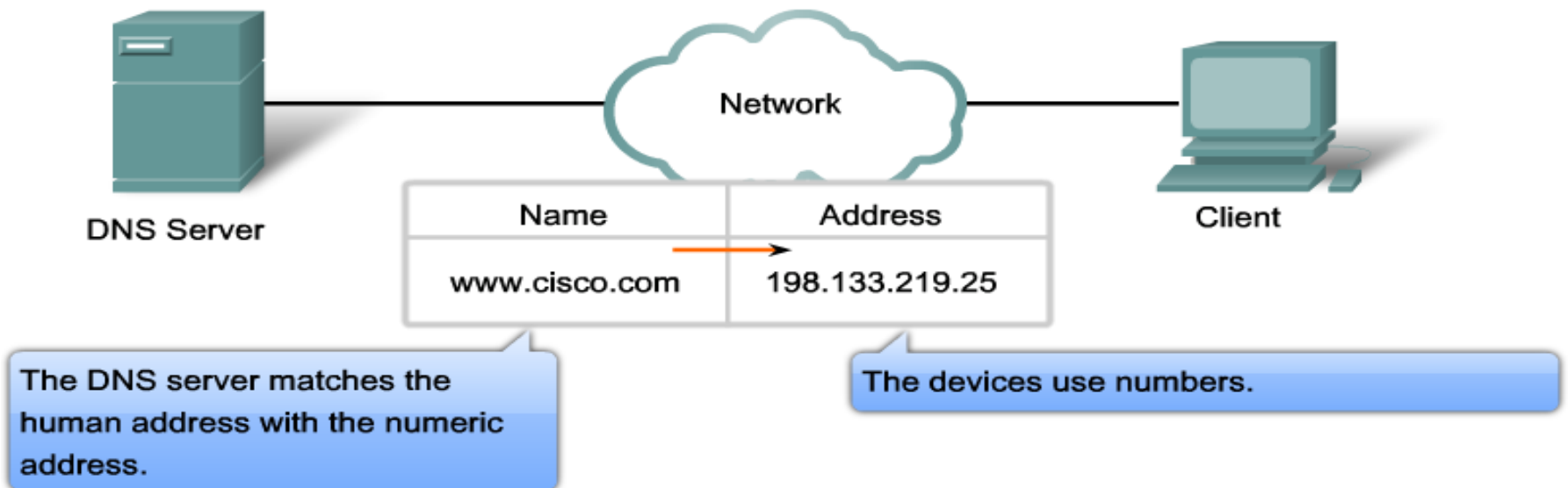
Domain Name Server DNS

Resolving DNS Addresses



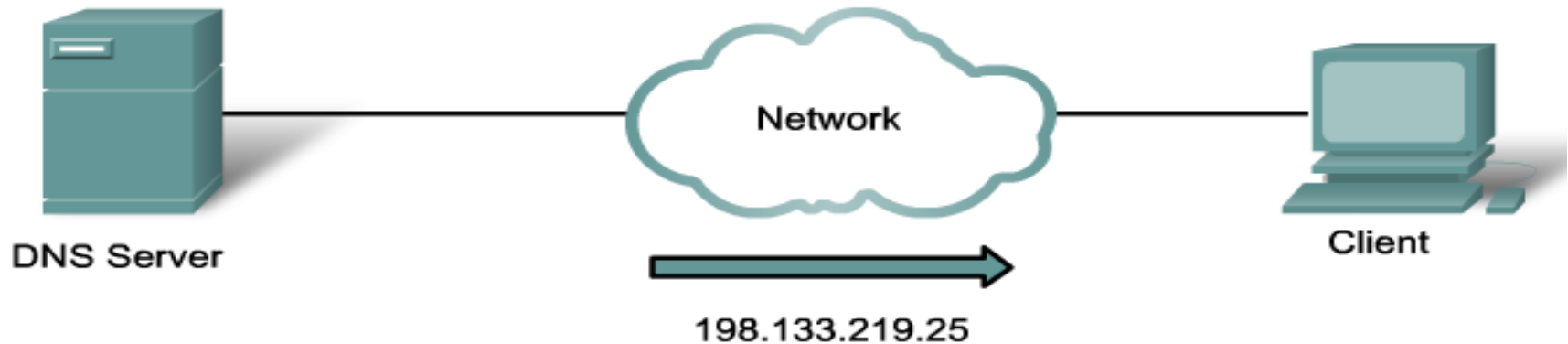
Domain Name Server DNS

Resolving DNS Addresses



Domain Name Server DNS

Resolving DNS Addresses



The number is returned back to the client for use in making requests of the server.

Domain Name Server DNS

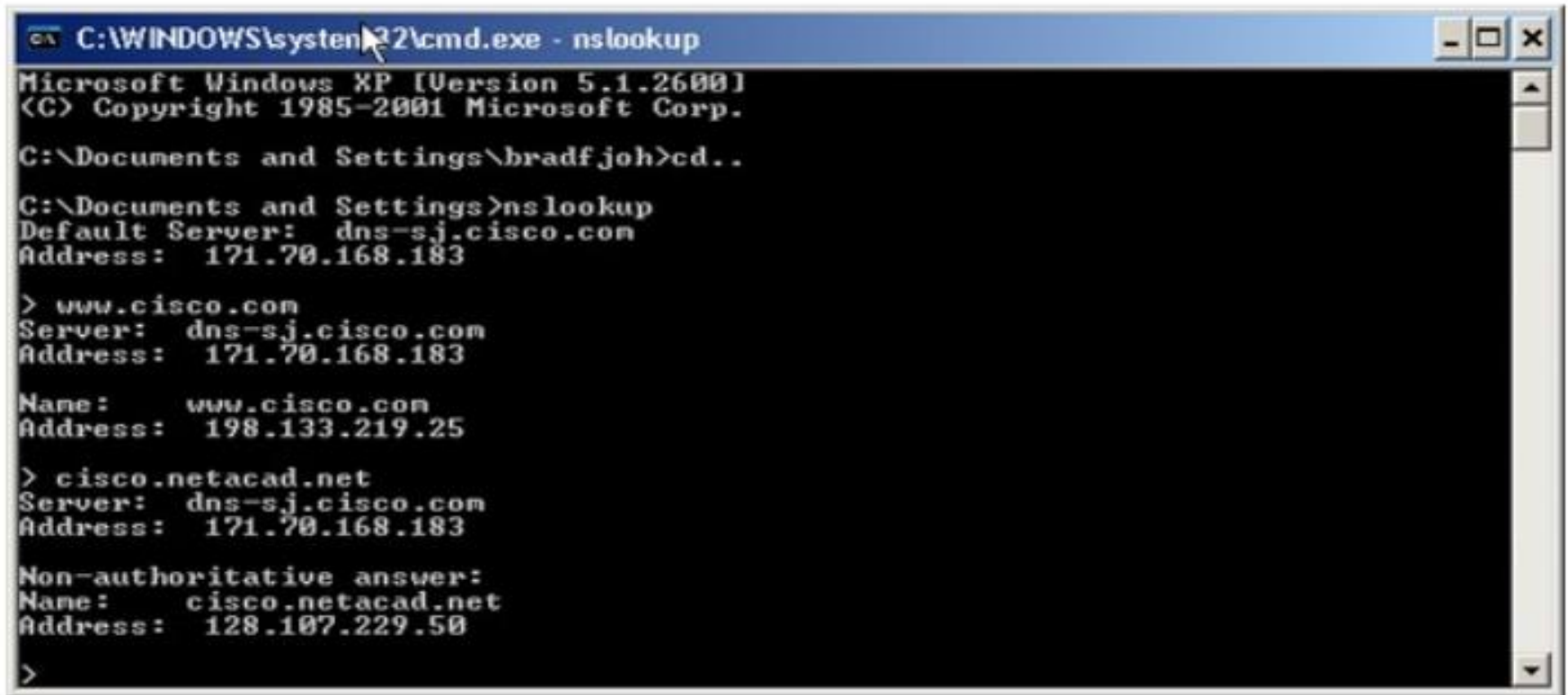
Resolving DNS Addresses



A human legible name is resolved to its numeric network device address by the DNS protocol.

Domain Name Server DNS

Using nslookup



```
C:\WINDOWS\system32\cmd.exe - nslookup
Microsoft Windows XP [Version 5.1.2600]
(C) Copyright 1985-2001 Microsoft Corp.

C:\Documents and Settings\bradfjoh>cd..

C:\Documents and Settings>nslookup
Default Server:  dns-sj.cisco.com
Address:  171.70.168.183

> www.cisco.com
Server:  dns-sj.cisco.com
Address:  171.70.168.183

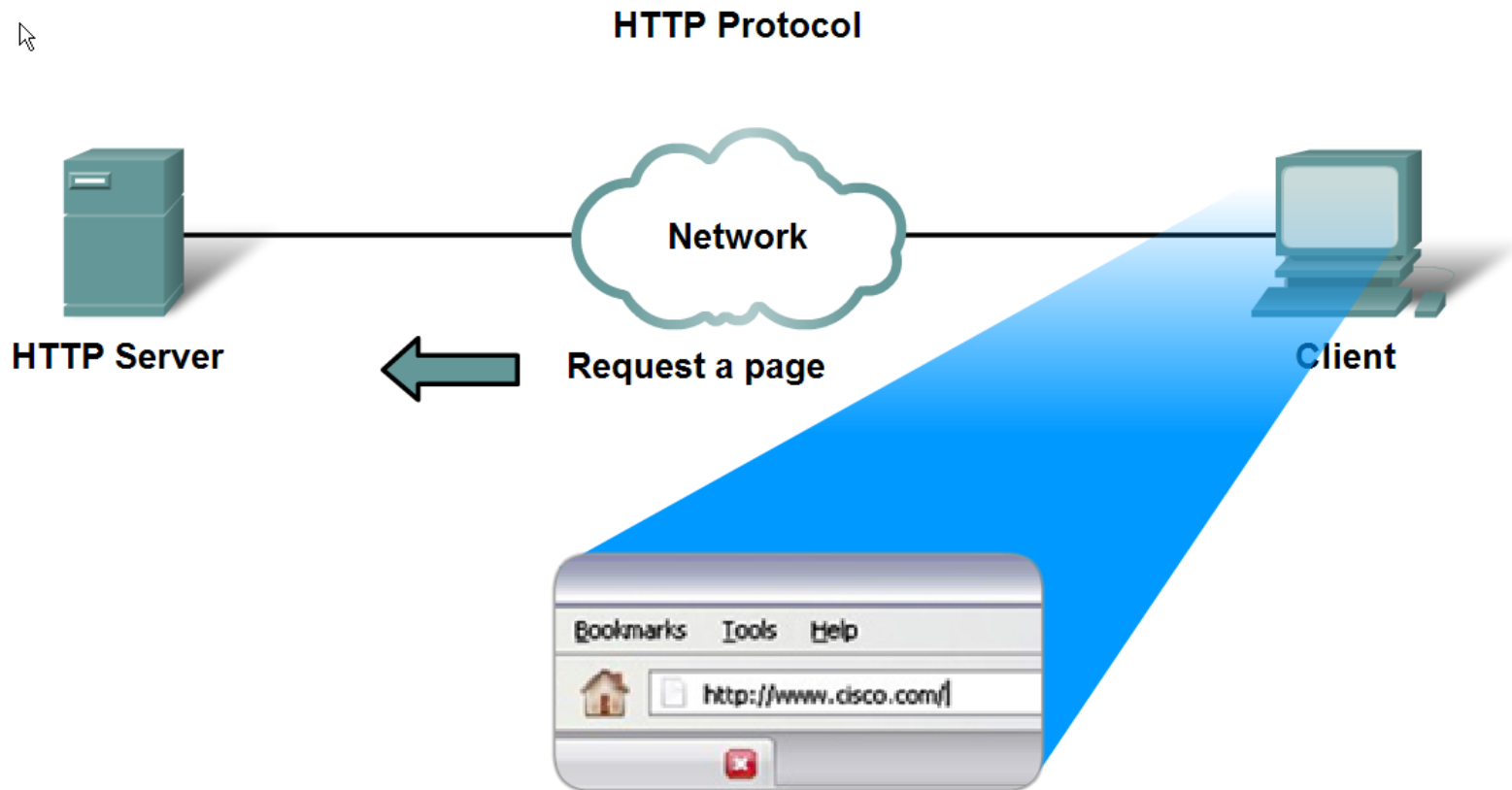
Name:    www.cisco.com
Address:  198.133.219.25

> cisco.netacad.net
Server:  dns-sj.cisco.com
Address:  171.70.168.183

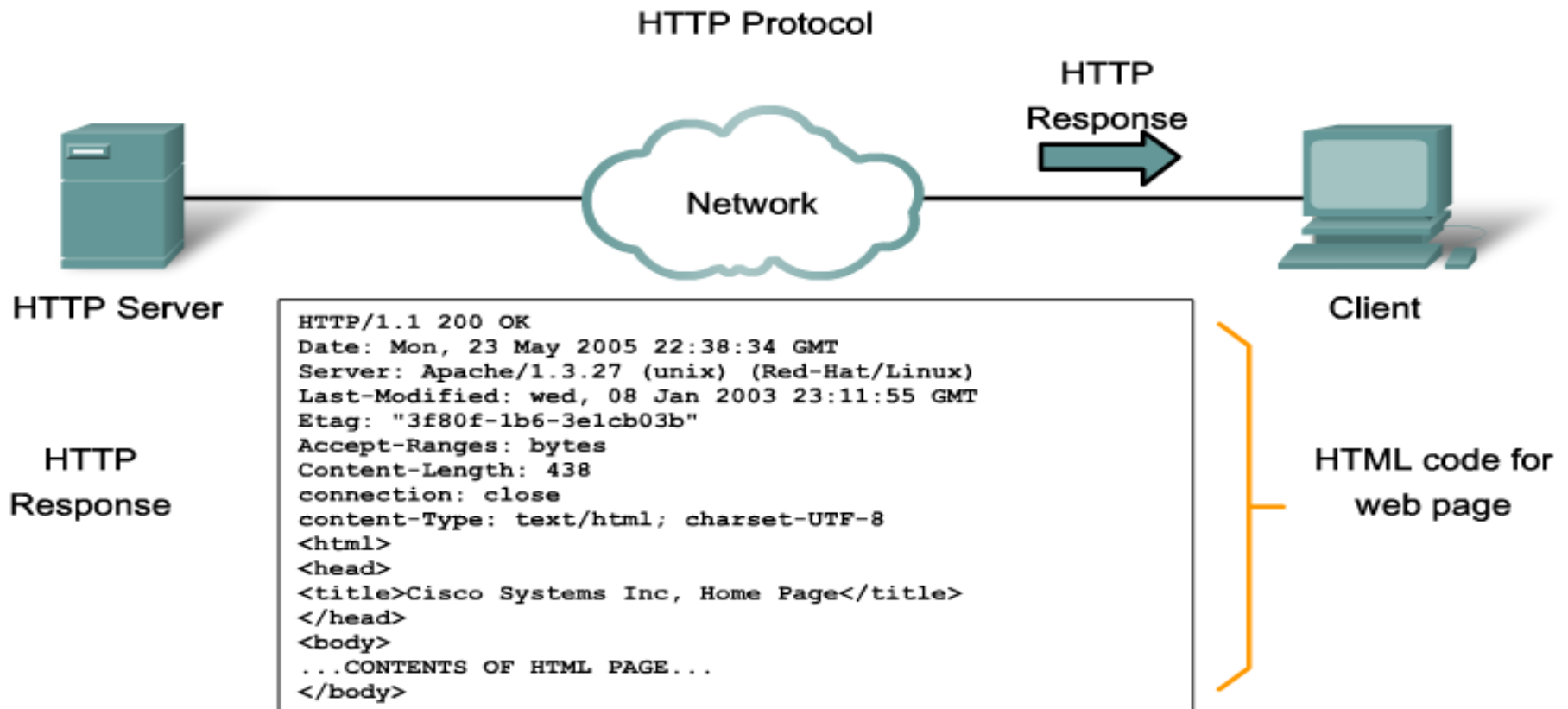
Non-authoritative answer:
Name:    cisco.netacad.net
Address:  128.107.229.50

>
```

HyperText Transfere Protocol HTTP

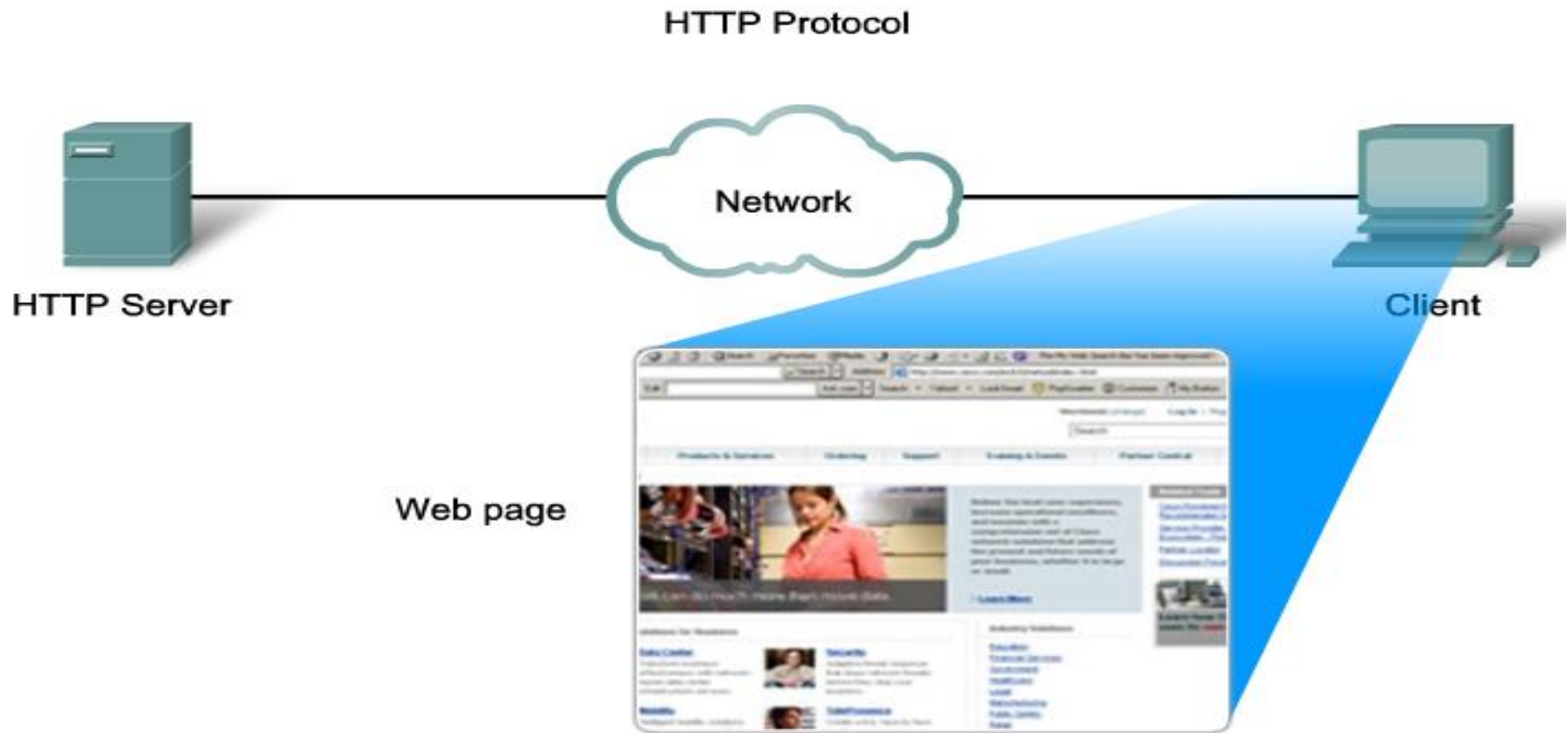


HyperText Transfere Protocol HTTP



In response to the request, the HTTP server returns code for a web page.

HyperText Transfere Protocol HTTP



The browser interprets the HTML code and displays a web page.

Post Office Protocol POP / Simple Mail Transfer Protocol SMTP

E-mail Client (MUA)

Mail User Agent (MUA)



Client

Send E-mail

SMTP Protocol

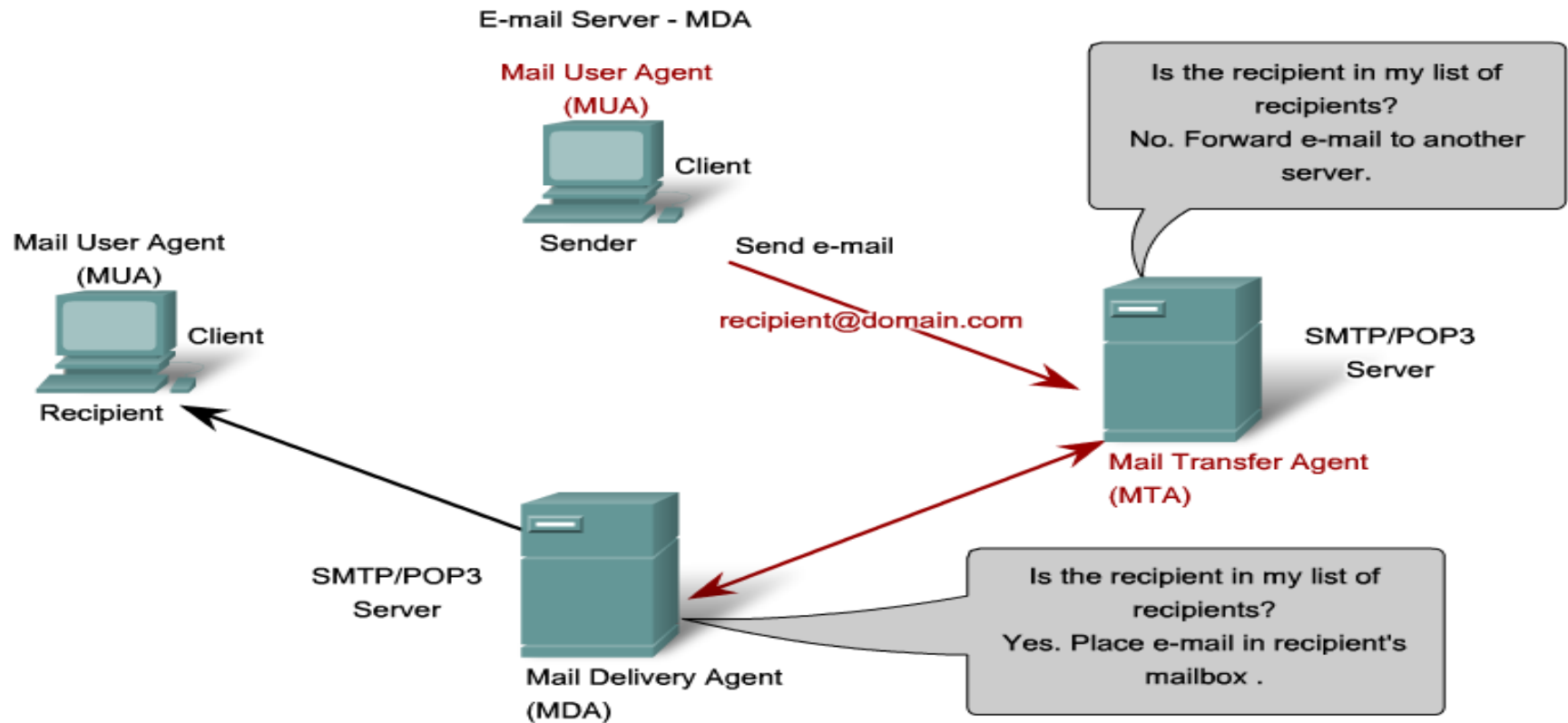
Get E-mail

POP Protocol



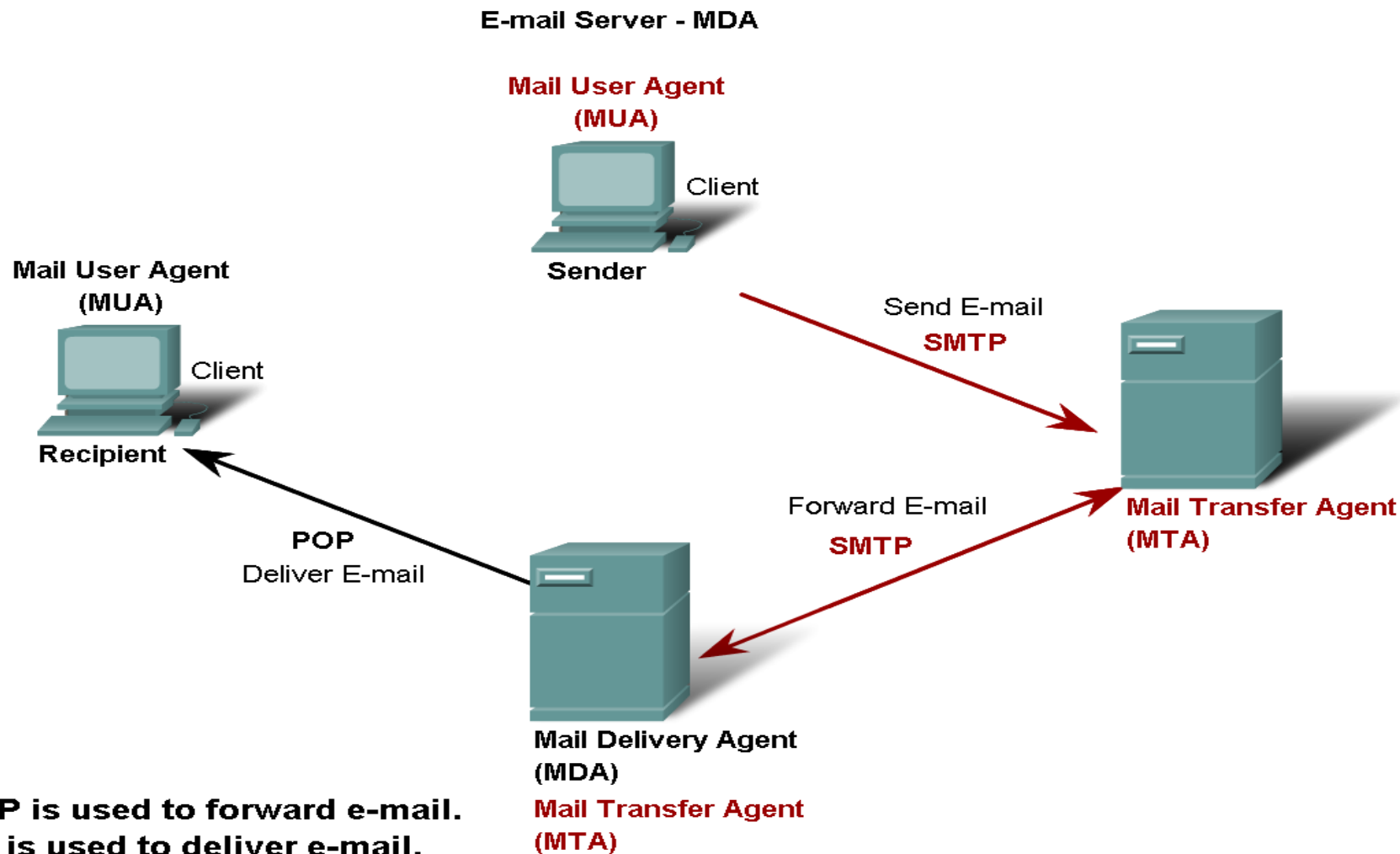
SMTP/POP3 Server

Post Office Protocol POP / Simple Mail Transfer Protocol SMTP

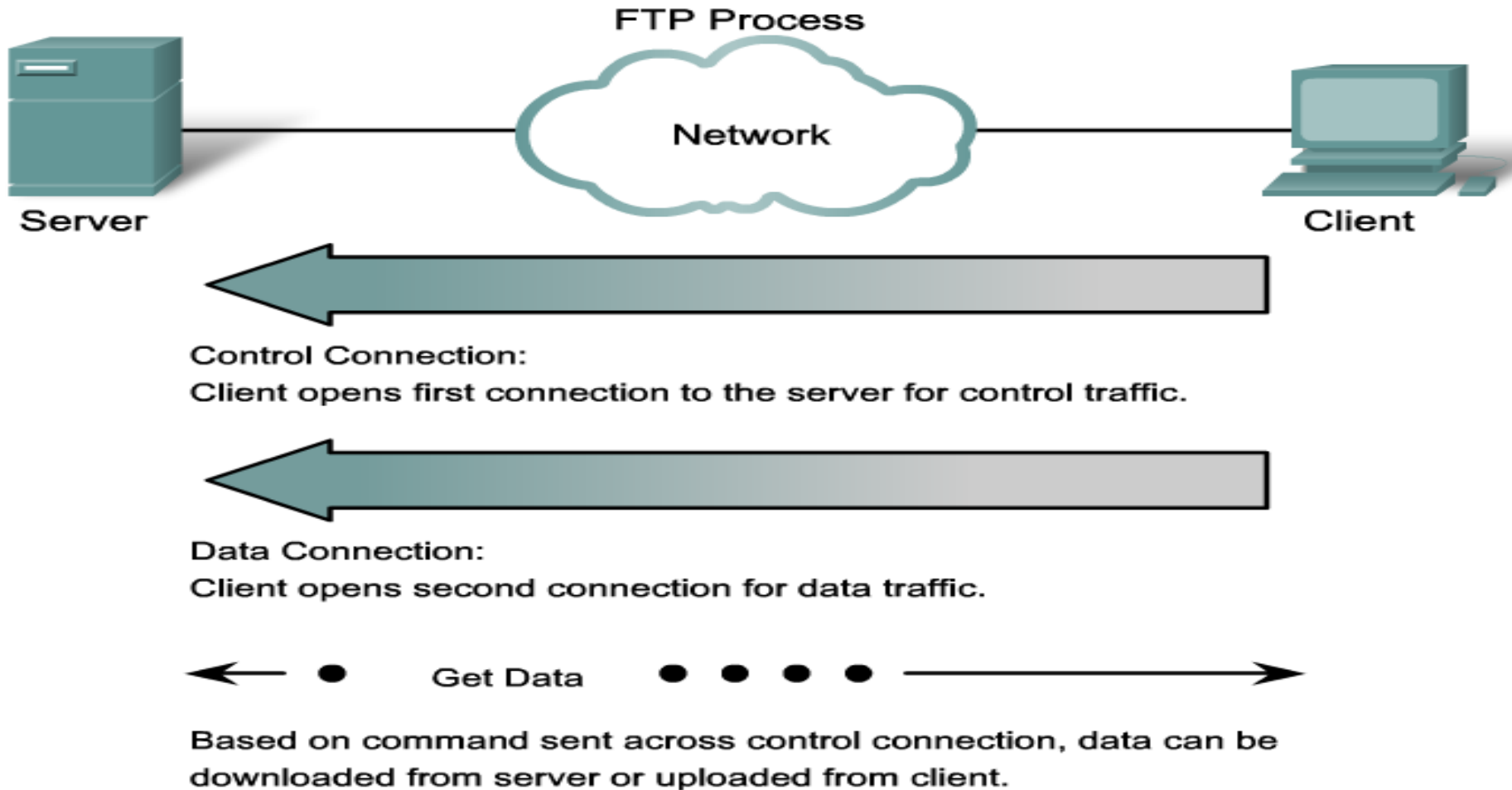


The Mail Delivery Agent process governs delivery of e-mail between servers and clients.

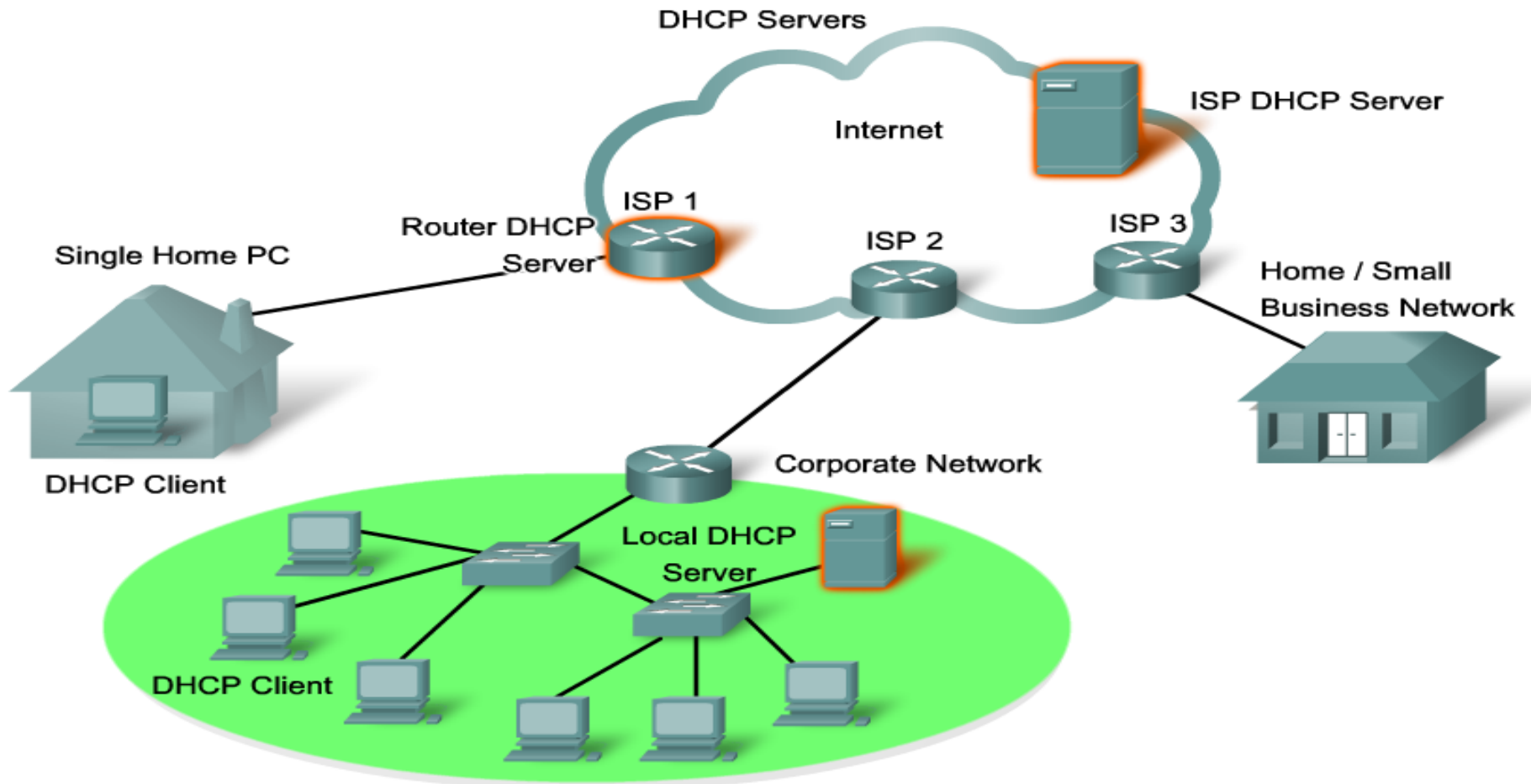
Post Office Protocol POP / Simple Mail Transfer Protocol SMTP



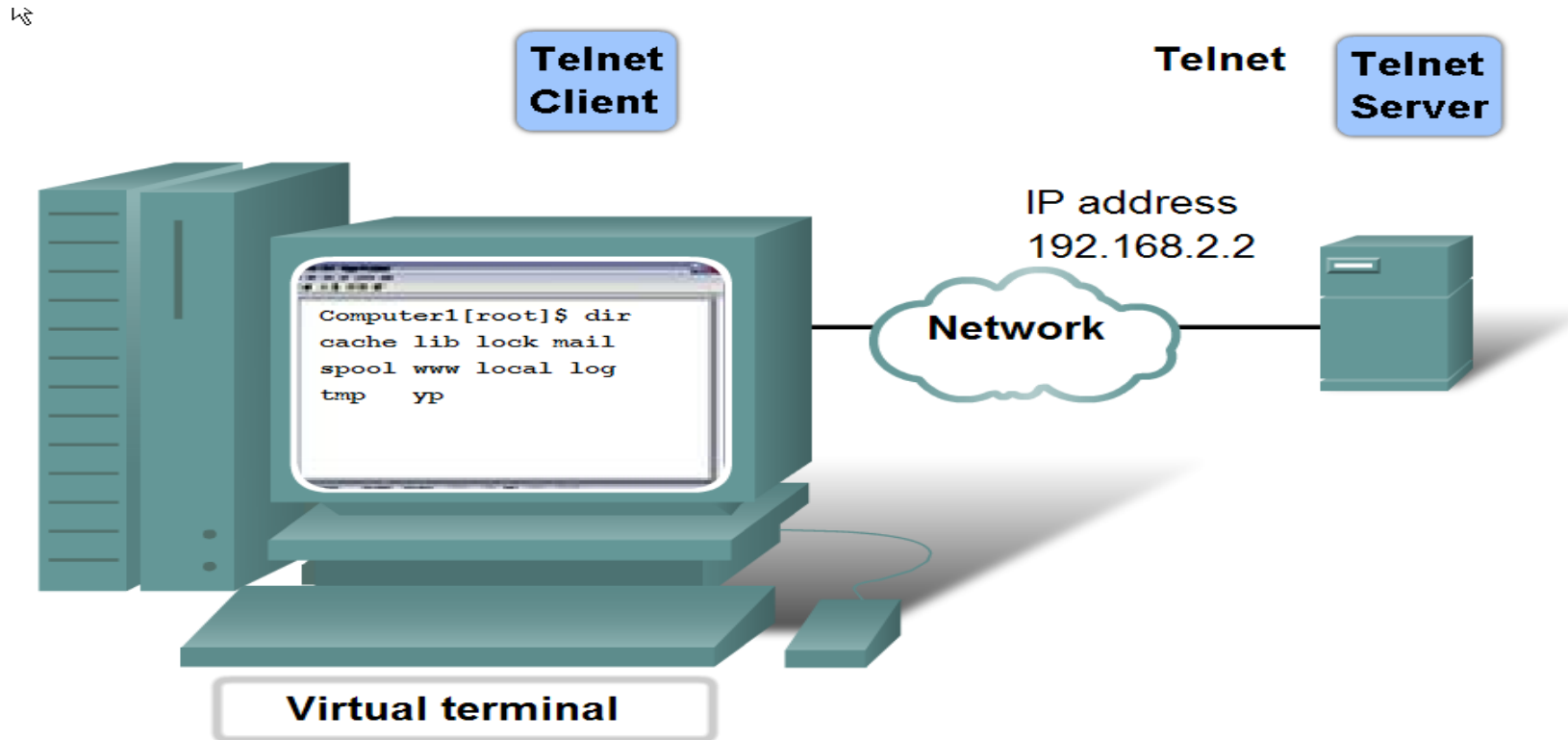
File Transfer Protocol FTP



Dynamic Host Configuration Protocol DHCP



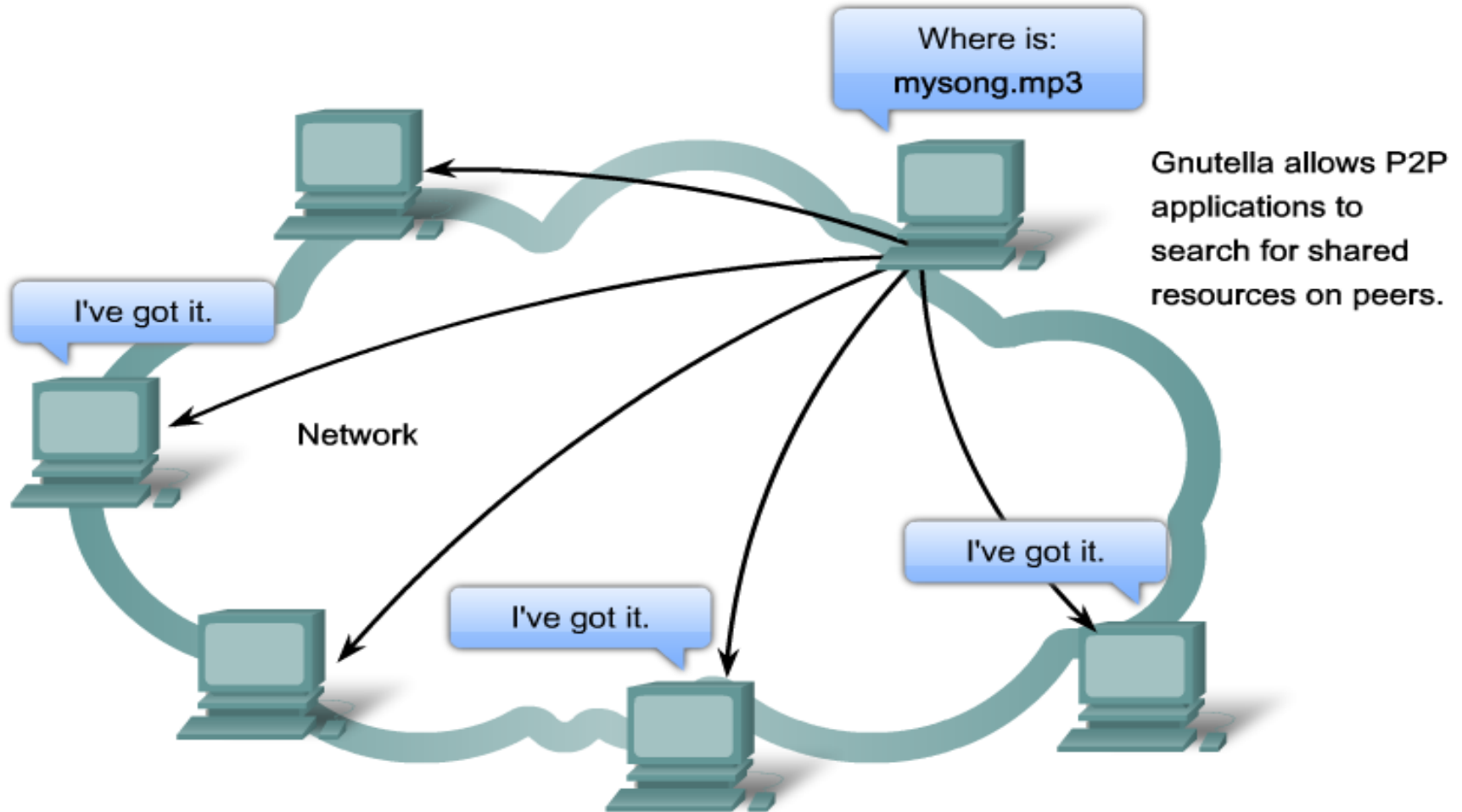
Telecommunication Network Telnet



Telnet provides a way to use a computer, connected via the network, to access a network device as if the keyboard and monitor were directly connected to the device.

Peer-To-Peer Application P2P

Gnutella Supports P2P Applications



Features, Operation, and Use of TCP/IP Application Layer Services

- Describe the features of the Gnutella protocol and the role it plays in supporting P2P services

